

You Are Not Alone

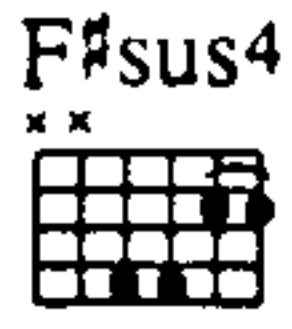
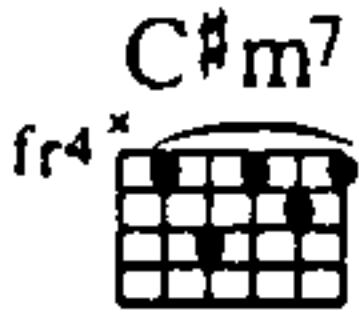
► Words & Music by Robert Kelly

© Copyright 1995 Zomba Songs Incorporated, USA.

Zomba Music Publishers Limited, 165-167 High Road, London NW10 2SG.

All Rights Reserved. International Copyright Secured.

$\text{♩} = 64$

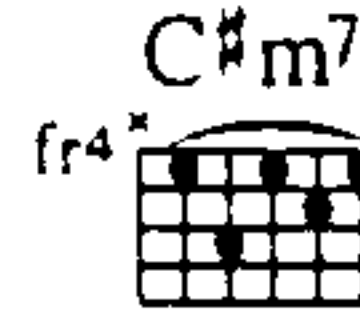
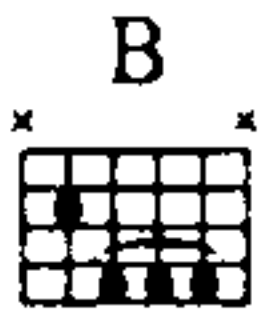


ad lib.

a tempo

1. An-oth - er day — has gone, —

Red.



I'm still all — a-lone —

how could this be, —

you're not here — with me. —

(Verses 2, 3 & 4 see block lyric)

F#7sus4

B

G#m7

You ne - ver said — good-bye, —

some-one tell — me why, —

did she have — to go —

1, 3.

C#m7
fr4

F#7sus4

and leave my world— so cold?—

A6

G#7
fr4

E

day I sit— and ask— my - self— how did this thing end?—

C#m7
fr4

F#7sus4

Some-thing whis - pers in— my ear— and says.— (2. 4.) You are not— a - lone —

2.

F#7sus4

B

Gmaj7

A/G

but you are not— a - lone— lone, —

B



Gmaj7



F#7sus4



why— lone. (3.) Just the oth - er night-

4.

F#7sus4



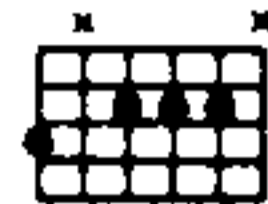
B



G



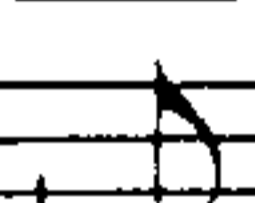
A/G



LA 20th M

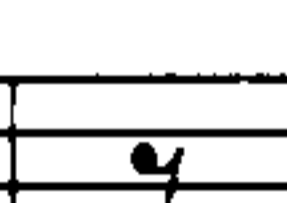
but you are not— a-lone.— Whis-per— three words— then I'll— come

Em7



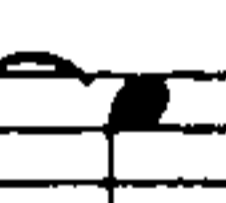
SOL SIMI'

Gmaj7



SOL/SI RE FAK

A/G

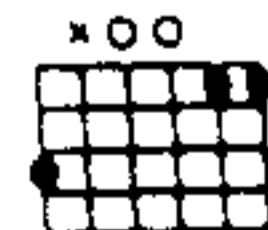


run - ning, I— and girl— you know— that I'll— be

F#7sus4



G7sus4

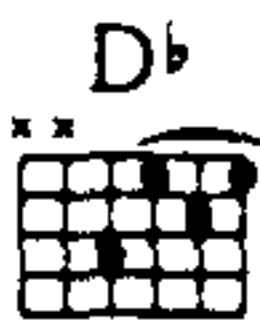


D:

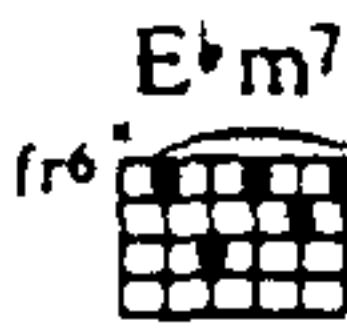


LA 20th FA

there, I'll be there. You are not— a-lone,-

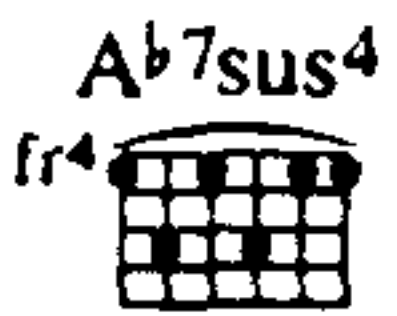


FA si re

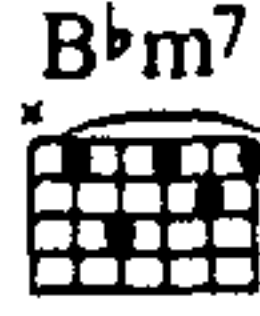
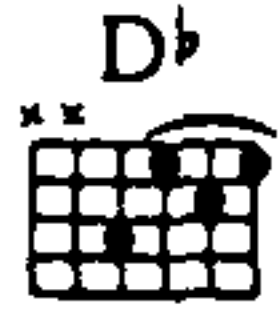


sol la mi

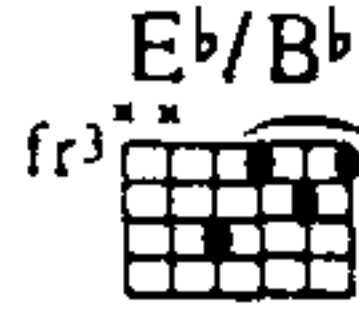
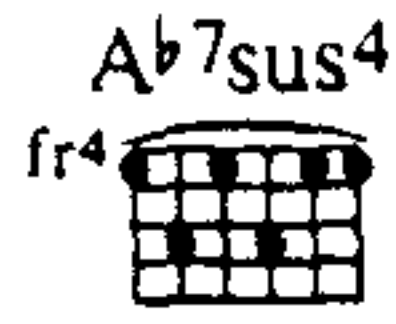
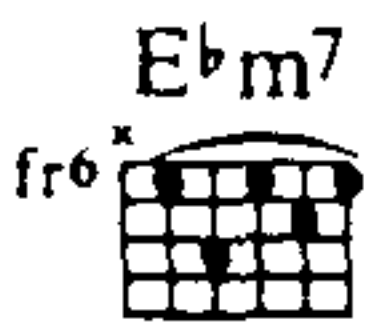
I am here— with you,— though you're far— a-way,— I am here— to stay,—



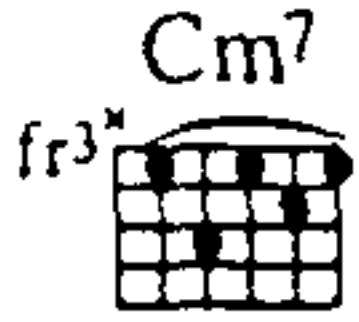
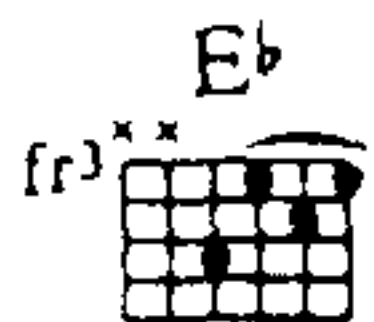
LA re mi



but you are not— a-lone— but I am here— with you,— though we're far— a-part,—



you're al-ways in— my heart— but you are not— a-lone—



I am here— with you,— though you're far— a-way,— I am here— to stay,—

